

Mobile View Software

User's Manual

Version 3.0.3 / 3.0.4

Table of Contents

1. Overview	2
1.1 System Requirement	2
1.2 Limitation	2
2. Install the Mobile View Software	3
3. Basic Functions.....	4
3.1 Live Monitoring	4
3.2 Normal Playback.....	7
3.3 Event Playback	8
4. Advanced Functions	9
4.1 Menu Config	9
4.2 Snapshot Viewer.....	14
5. Help.....	15
6. About.....	17
Appendix A: Troubleshooting.....	18
Appendix B: Compatible List.....	20

1. Overview

The Mobile View Software is developed as an extraordinary feature to the DVR, which enables easy monitoring anytime at anywhere as long as mobile devices with internet connection are available. Users can perform live monitoring, normal/event playback, DVR menu configuration, or even dome camera PTZ control via cell phone or PDA. The Mobile View Software maximizes the usage of Ethernet and minimizes the loss that is possibly caused due to the delay of time.

Features

- Supports MPEG-4 / MJPEG / H.264 decoding
- Remotely view Live / Playback videos with selectable channel
- Remotely view Event Playback videos
- Remotely configure DVR menu
- Supports dome camera PTZ control
- Supports video zoom and pan/tilt
- Supports DDNS connection and snapshot function
- Supports Snapshot to mobile devices

1.1 System Requirement

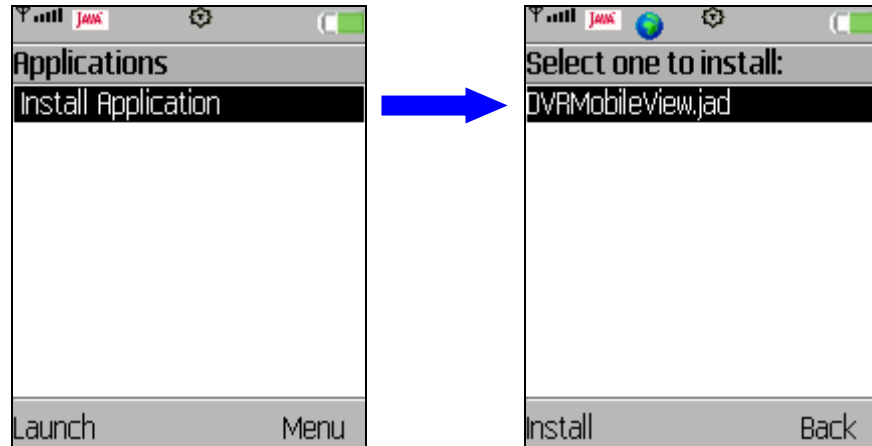
- Network: 3G/3.5G, WLAN, GPRS, or higher network environment
- Any mobile devices support J2ME, CLDC 1.1, MIDP 2.0
- The snapshot picture could be download if the mobile device supports "PDA Profile for J2ME (JSR 75)"

1.2 Limitation

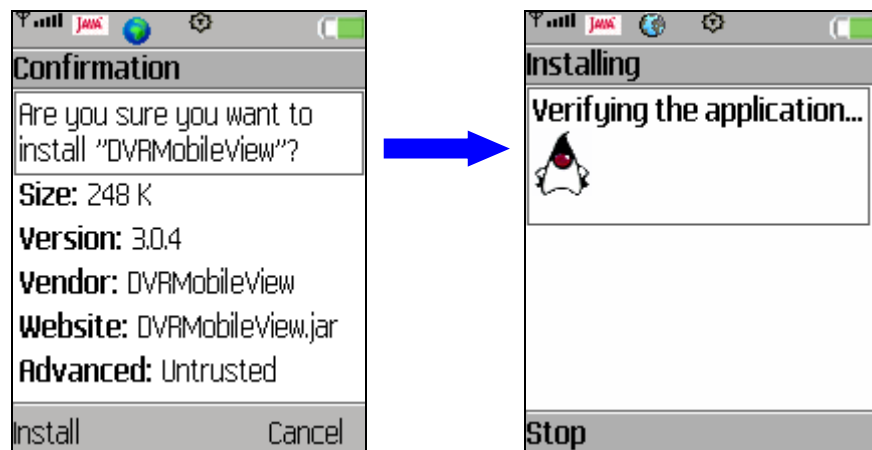
- "Motion Detection Area Setup" in "Menu Config" is not supported.
- For those mobile devices do not support file saving function, the snapshot pictures can only be viewed by "Snapshot Viewer".
- Some mobile devices do not support DDNS connection.

2. Install the Mobile View Software

Access the java installation menu on a mobile device to directly install the Mobile View Software to the device. Enter a website address containing the setup file of the Mobile View Software. Find the file “DVRMobileView.jad” and press <Install>. Note that the installation procedure may be different for various mobile devices.



When the file has been downloaded, a confirmation window will be shown. Confirm the version number and press <Install> to start the installation. When the installation is completed, the Mobile View Software is ready to be used.



For those mobile devices do not support file saving function or even do not detect file saving function, the software version which ends in an even number should be installed.

3. Basic Functions

Locate the installed Mobile View Software and launch it. The main page will be shown as below. The basic functions will be described in this chapter.

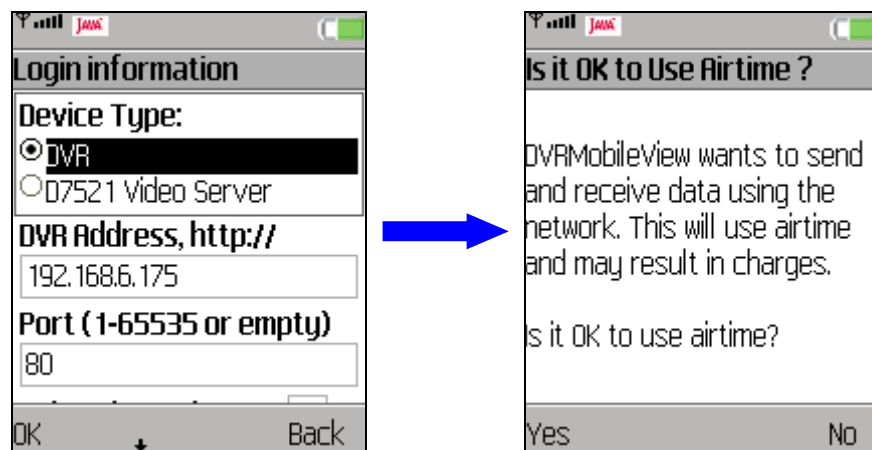


3.1 Live Monitoring

“Live Monitoring” allows users to view live image of a DVR or a video server. In addition, users can switch channel, view zoomed image, take snapshot pictures, or even control PTZ function when viewing a dome camera image.

Connect to a device:

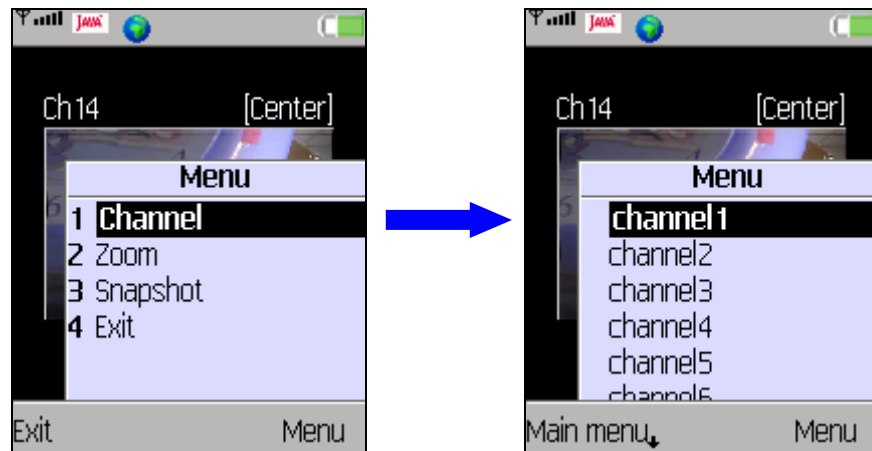
Select <Live Monitoring> and press <Start>, the “Login information” window will be displayed. Choose a device type (DVR or D7521 Video Server) and enter device address, port, channel (for DVR), username, and password. The address can be either a **hostname** or an **IP address**. When all information are entered, press <OK> and a confirmation regarding internet usage charge will be displayed. Press <Yes> to confirm.



The Mobile View Software will start to connect to the device. When the connection is established, the camera image will be displayed on the screen.

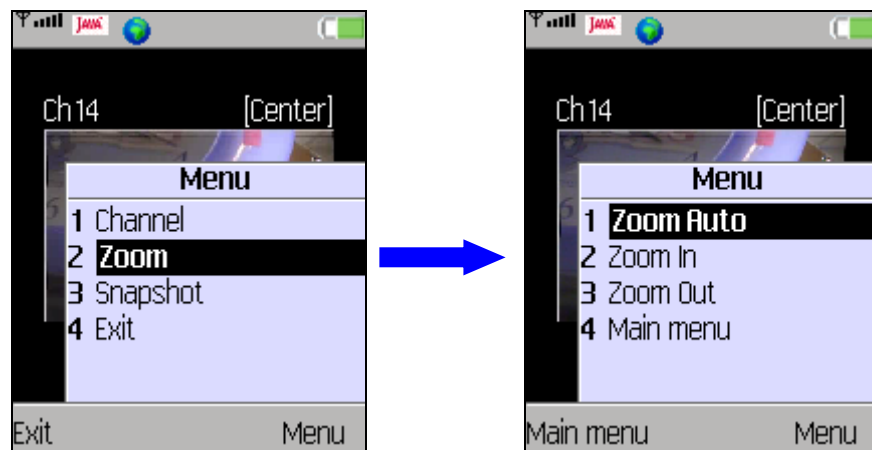
Switch to a different channel:

Press <Menu> and select <Channel>. Then press <Menu> again and select any channel (or press 0~9 keys for channels 1~10) to be displayed on the screen. Press <Main menu> to exit without switching to any other channel.



View zoomed image:

Press <Menu> and select <Zoom>. Then press <Menu> again and select <Zoom Auto>, <Zoom In>, or <Zoom Out> to view desired image.



Zoom Auto: show original size of the image.

Zoom In: enlarge the image; or press "UP" key to zoom in.

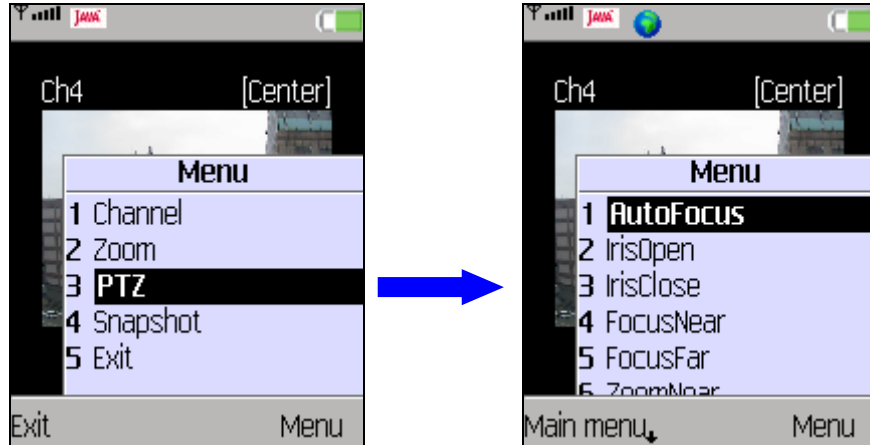
Zoom Out: shrink the image; or press "DOWN" key to zoom out.

After zoomed in the image, press 2/4/6/8 keys to shift the image. Also, press 1/3/5/7/9 keys or "LEFT/RIGHT" keys to view center or four corners of the image. The hint on the upper right-hand corner will show the position of displayed image, including Center, Left-Top, Right-Top, Right-Bottom, and Left-Bottom.

Press <Main menu> to exit viewing zoomed image.

Dome Camera PTZ control:

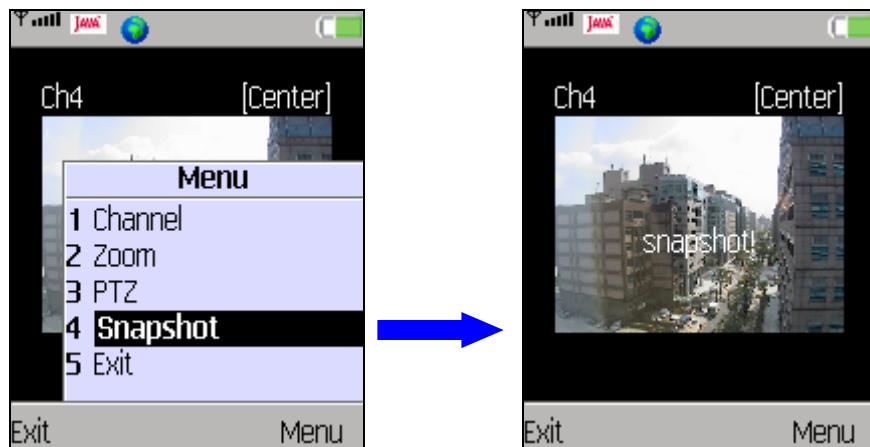
If the viewing channel is a dome camera, the PTZ control function will be available. Press <Menu> and select <PTZ>. Then press <Menu> again to select action items: Auto Focus, Iris Open/Close, Focus Near/Far, or Zoom Near/Far. Press the direction keys to pan/tilt the camera lens.



Press <Main menu> to exit dome camera PTZ control mode.

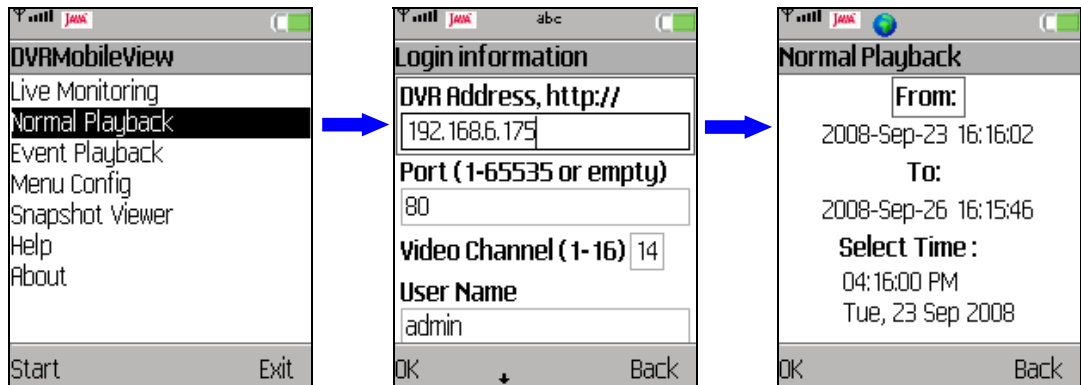
Take a snapshot picture:

To take a snapshot picture of current viewing image, press <Menu> and select <Snapshot>. Alternatively, press the key in the center of direction keys will take a snapshot picture as well. The pictures can be viewed in <Snapshot Viewer>. Refer to section [Snapshot Viewer](#) for more information regarding viewing the snapshot pictures.

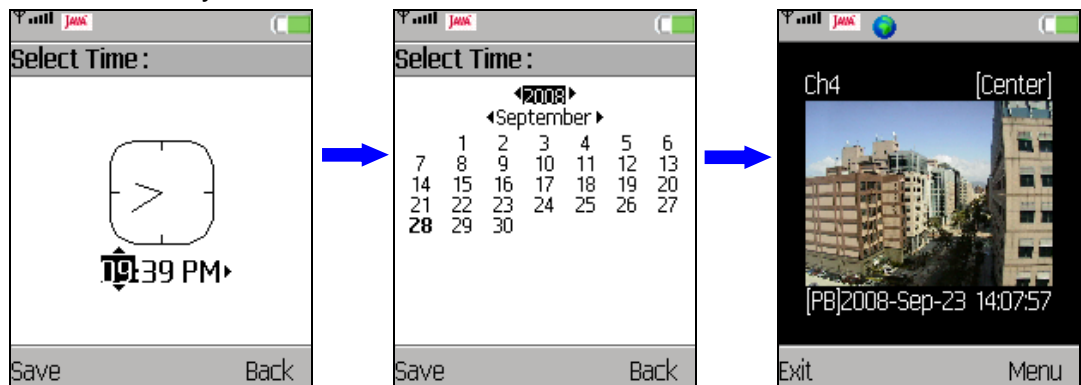


3.2 Normal Playback

“Normal Playback” allows users to playback normally recorded videos of a DVR. From the main page of the Mobile View Software, select <Normal Playback> and press <Start>. Then enter a DVR’s address, port, channel, username and password in the “Login information” window. When the DVR is connected, the “Normal Playback” window will be displayed as below.



Press “DOWN” key to move selection box to time and date to set playback starting time and date. Then press <OK> to start the playback. As shown below, “[PB]” will be displayed in from of date/time indicating that it is currently in “Normal Playback” mode.



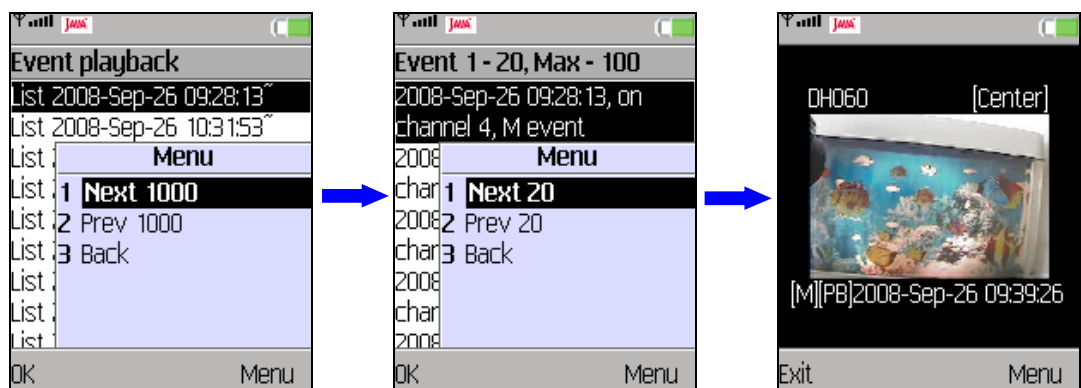
Press <Menu> and the option items are Channel, Zoom, and Snapshot, whose operation is the same as in “Live Monitoring” mode. Refer to section [Live Monitoring](#) for more details.

3.3 Event Playback

“Event Playback” allows users to playback event videos of a DVR. From the main page of the Mobile View Software, select <Event Playback> and press <Start>. Then enter a DVR’s address, port, username and password in the “Login information” window. When the DVR is connected, the “Event Playback” window will be displayed as below.



On the screen is an index of lists, which each contains 100 events. If the index contains more than 1000 lists, press <Menu> and select <Next 1000> or <Prev 1000> to surf faster. Press “UP/DOWN” key to scroll through the screen and select a list.



Each page of the list contains 20 events. Press <Menu> and select <Next 20> or <Prev 20> to show a different page. Press “UP/DOWN” key to scroll through the events and press <OK> to start the playback. As shown above, “[M][PB]” will be displayed in from of date/time indicating that it is currently in “Event Playback” mode. The first letter indicates event type, for example M=motion.

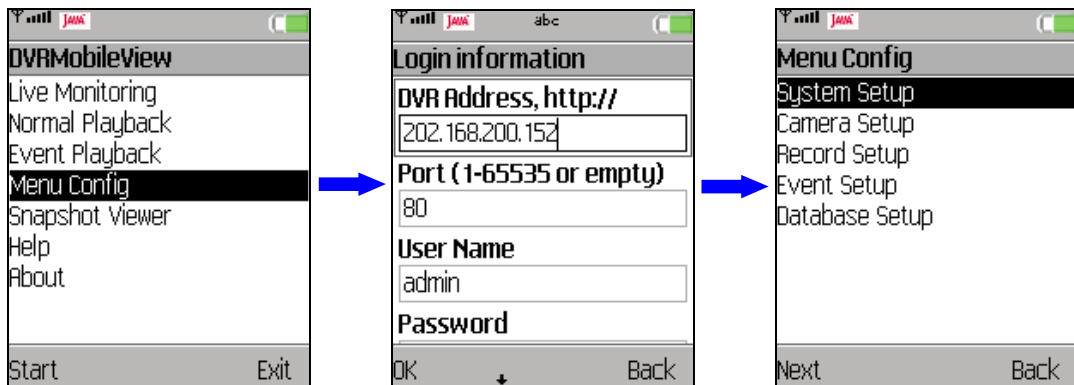
Press <Menu> and the option items are Zoom and Snapshot, whose operation is the same as in “Live Monitoring” mode. Refer to section [Live Monitoring](#) for more details.

4. Advanced Functions

In addition to live monitoring and playback functions, the Mobile View Software also provides some advanced functions: “Menu Config” and “Snapshot Viewer”. These two functions will be described in this chapter.

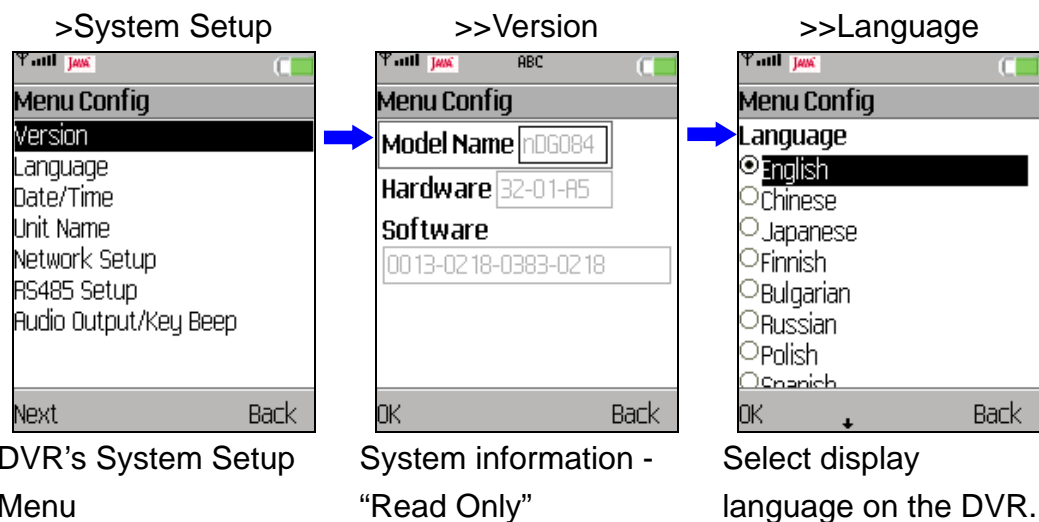
4.1 Menu Config

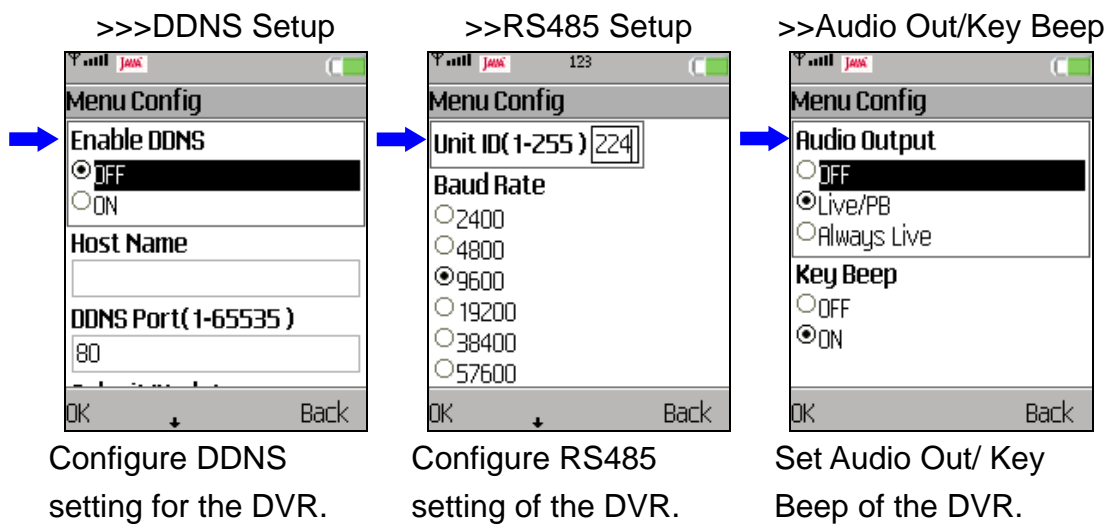
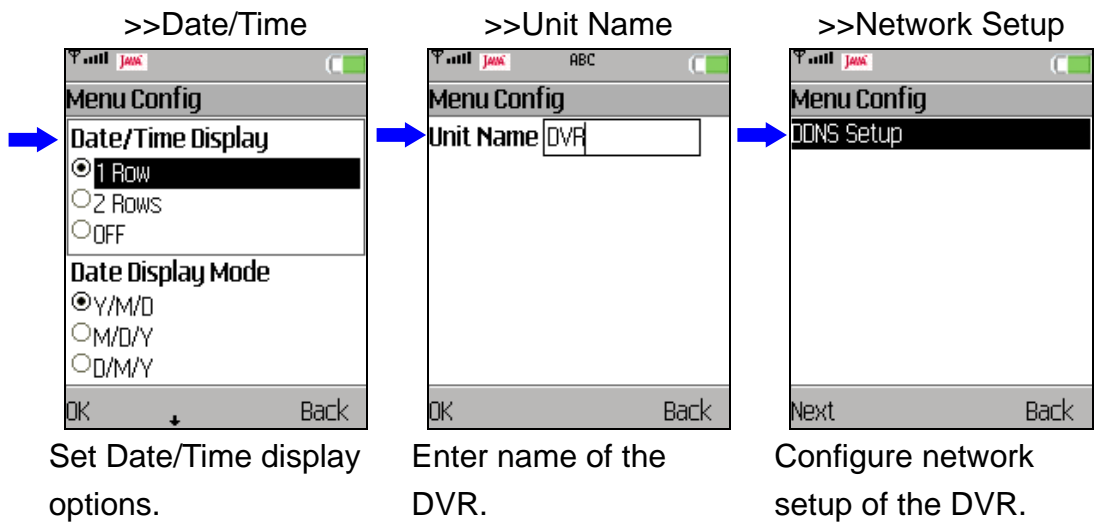
“Menu Config” enables users to connect to a DVR and configure its OSD settings. From the main page of the Mobile View Software, select <Menu Config> and press <Start>. Then enter a DVR’s address, port, username and password in the “Login information” window. Login with the administrator username and password to obtain fully access of the DVR’s OSD setup menu. When the DVR is connected, the “Menu Config” window will be displayed as below. Note that only the administrator account can change the configuration without limitation.



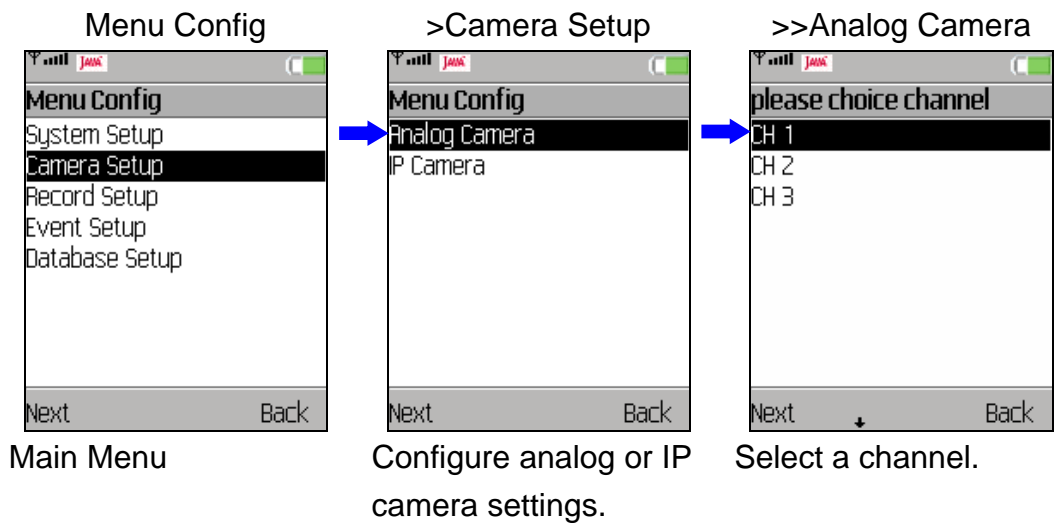
The menu items for different DVR models will be slightly different. Refer to the following for an example menu and its brief description:

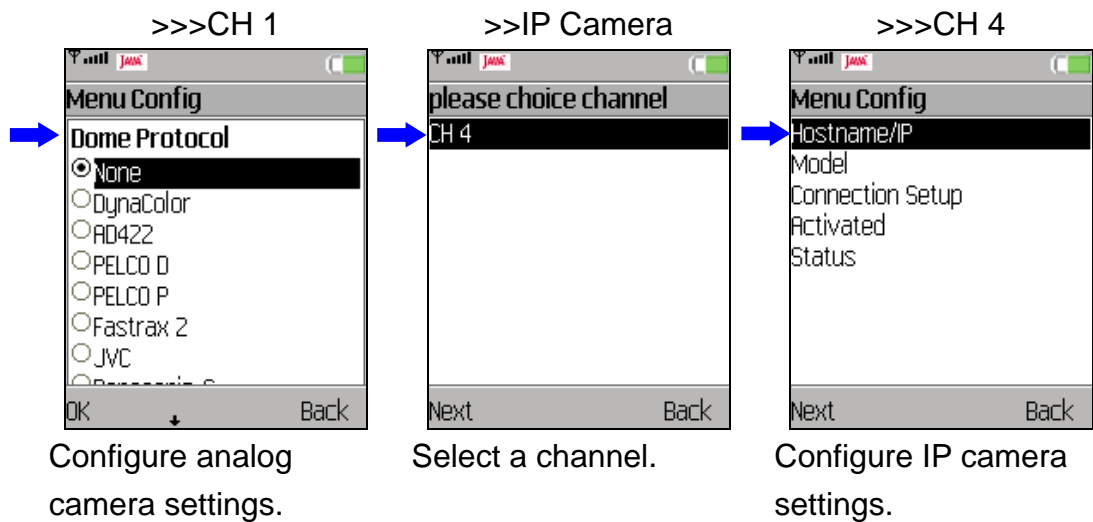
System Setup:



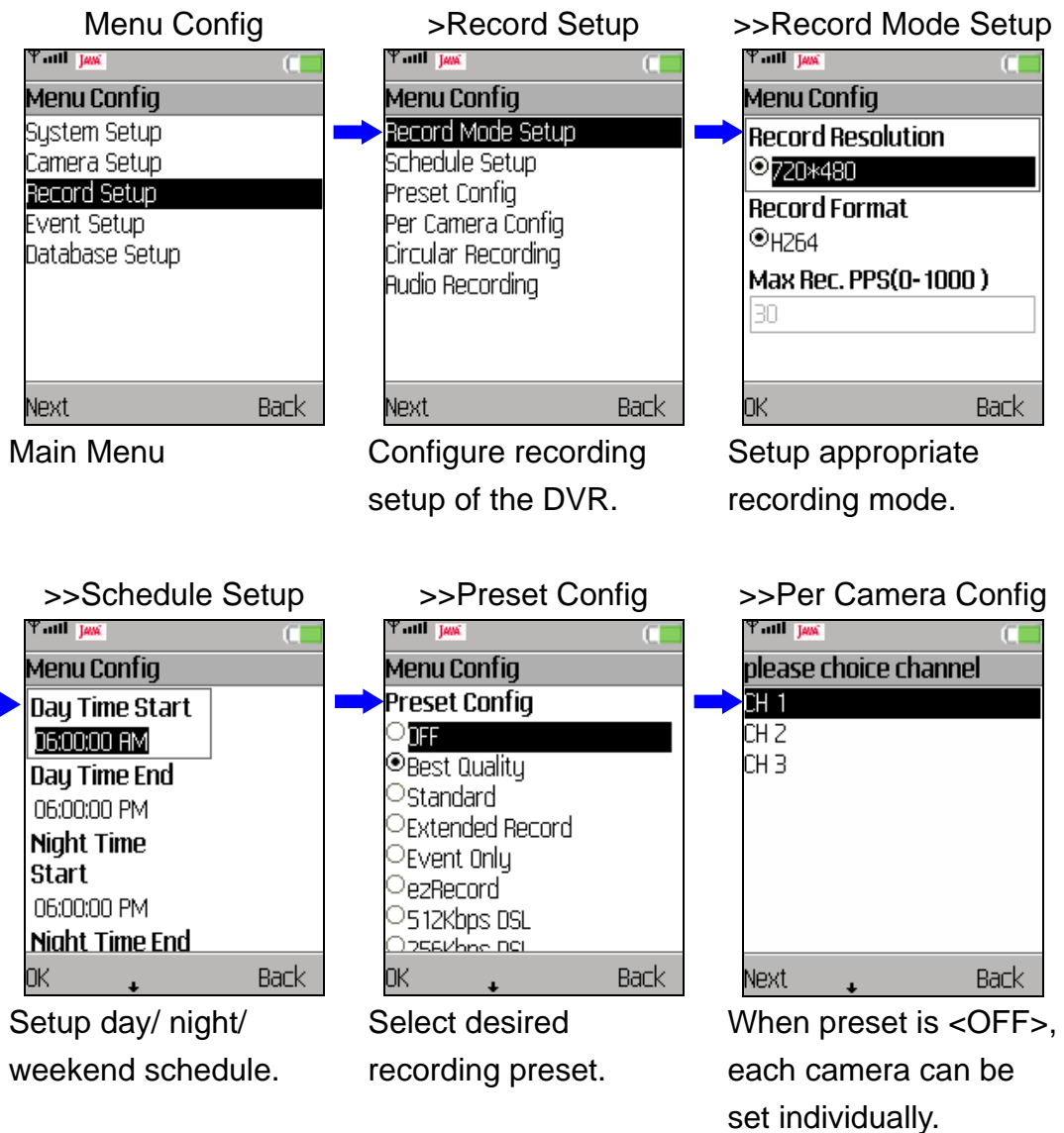


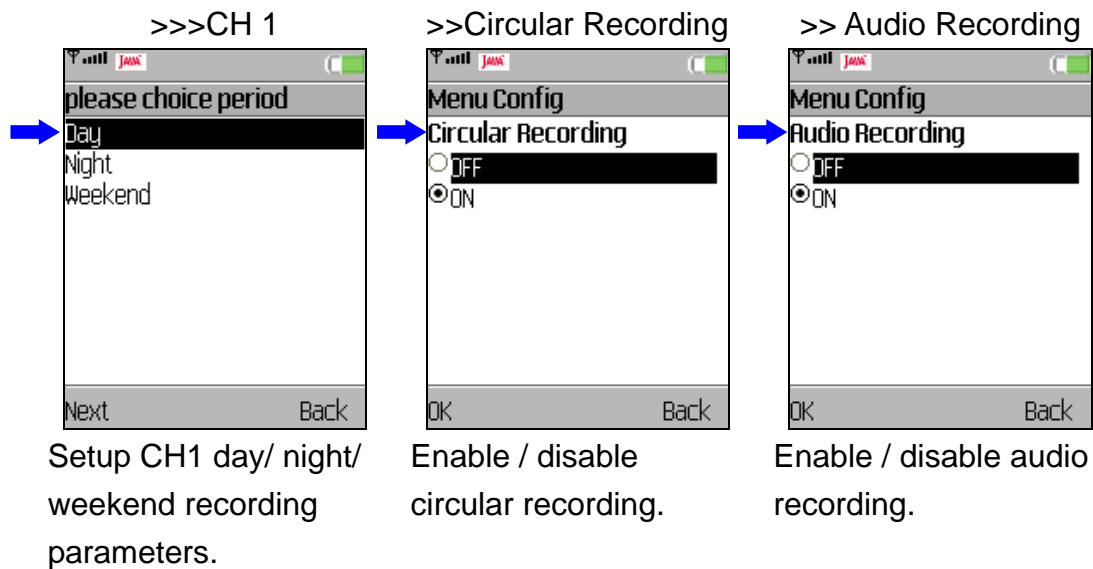
Camera Setup:



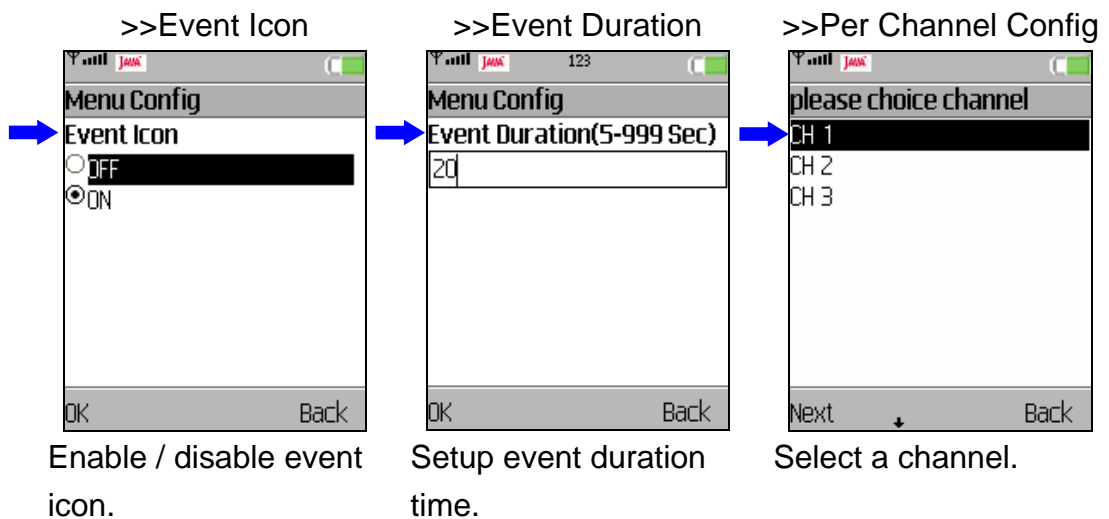
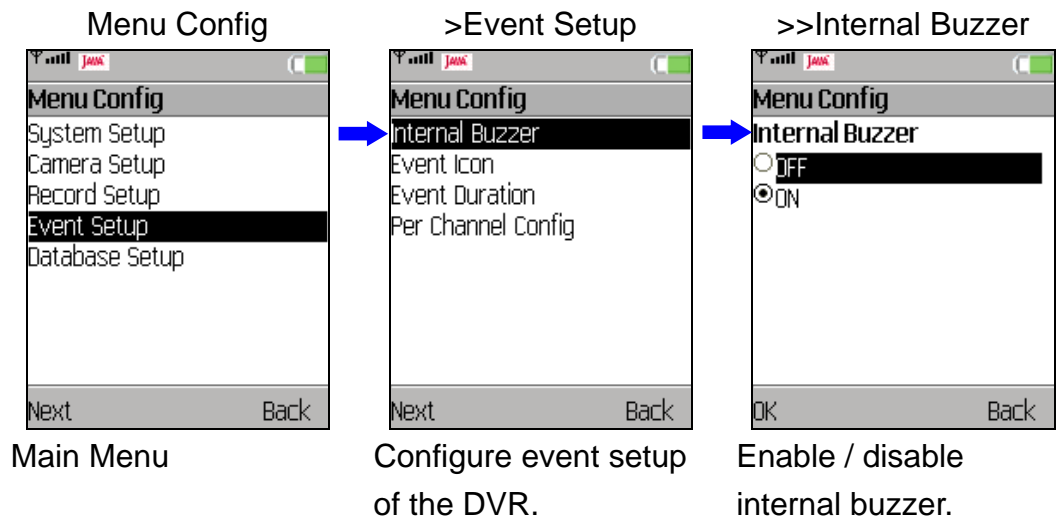


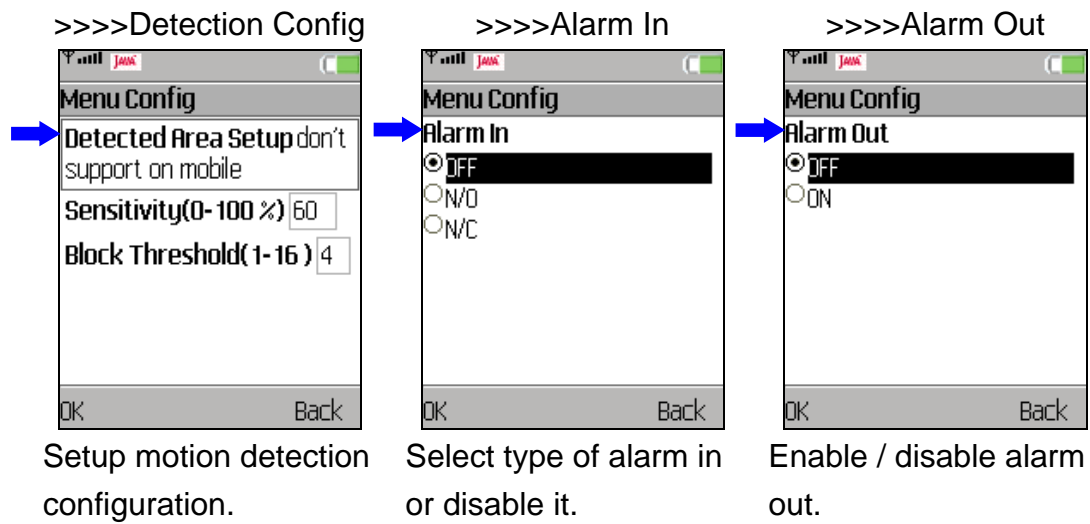
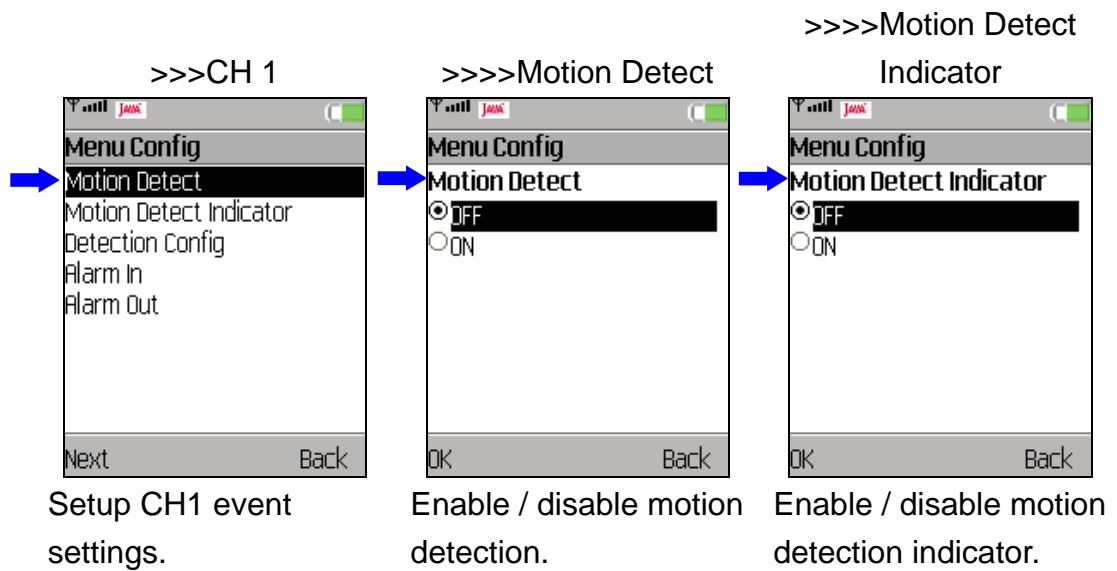
Record Setup:



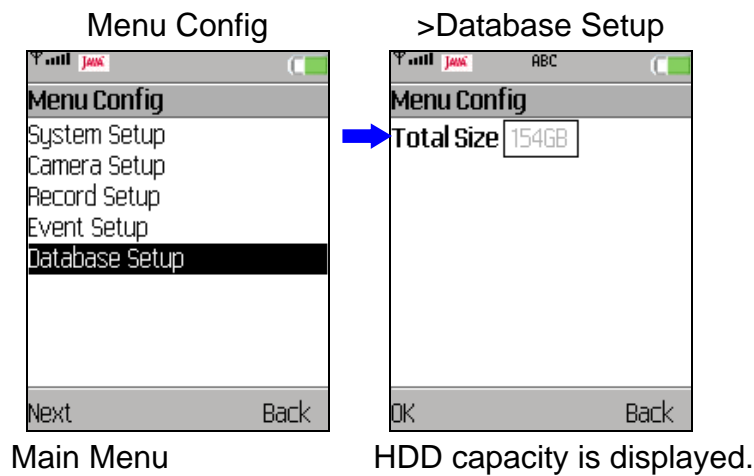


Event Setup:



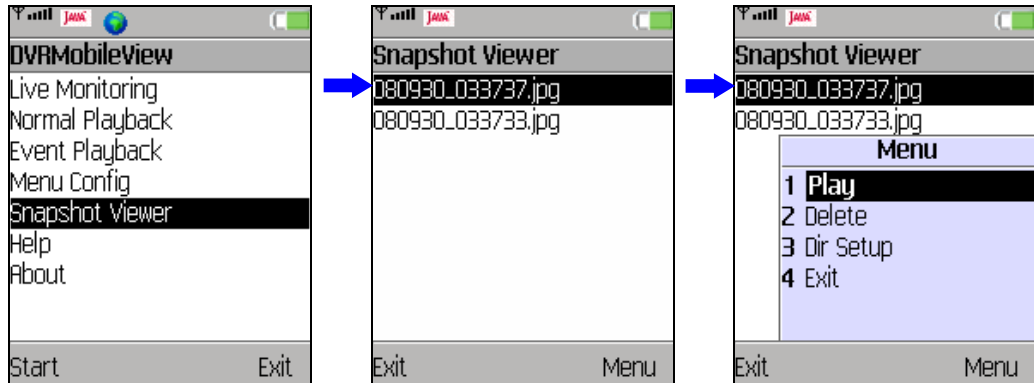


Database Setup:



4.2 Snapshot Viewer

The snapshot pictures can be viewed and edited in “Snapshot Viewer”. From the main page of the Mobile View Software, select <Snapshot Viewer> and press <Start>. All snapshot pictures will be listed.



Press <Menu> and the items are:

Play: View the selected snapshot picture.

Delete: Delete the selected snapshot picture.

Dir Setup: Select a directory folder to save the snapshot pictures.

While viewing a snapshot picture, press <Menu> to change it. Note the change is not permanent.

The items are:

Zoom Auto: View the original size of the picture.

Zoom In: Enlarge the picture.

Zoom Out: Shrink the picture.

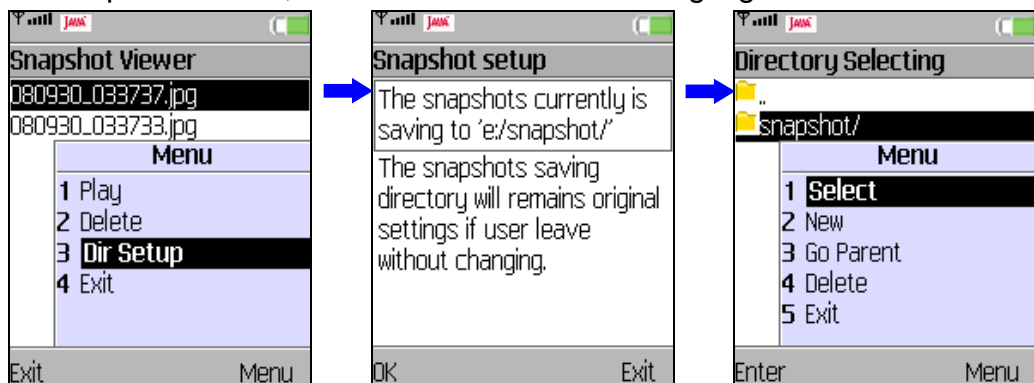
Rotate 180: Rotate the picture in 180°.

Mirror: View the mirror image of the picture.



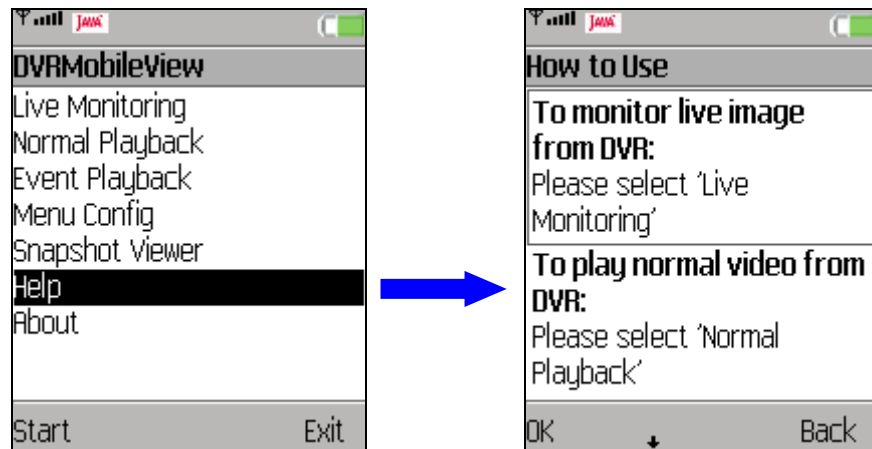
Setup directory folder:

Press <Menu> and select <Dir Setup> to select a directory folder to save the snapshot pictures. Press <Menu> and choose <Select> to set the highlighted folder as directory. Choose <New> to create new folder, <Go Parent> to return to parent folder, or <Delete> to delete the highlighted folder.



5. Help

A simple usage description can be found in “Help”. From the main page of the Mobile View Software, select <Help> and press <Start>.



The description is as the following:

To monitor live image from DVR: Please select 'Live Monitoring'

To play normal video from DVR: Please select 'Normal Playback'

To play event video from DVR: Please select 'Event Playback'

To configure DVR's setting: Please select 'Menu Config'

To view the stored images: Please select 'Snapshot Viewer'

Connection guide: After choosing one of the above option, you should provide the following informations for DVR connection,

1. IP address (DNS or DDNS are also fine)
2. Port number (Please refer to DVR's trigger port)
3. Camera channel
4. User name (admin or user)
5. Password

Advanced operations for monitoring playback: The following operations are provided for monitoring playback. You can choose one of them from the menu button.

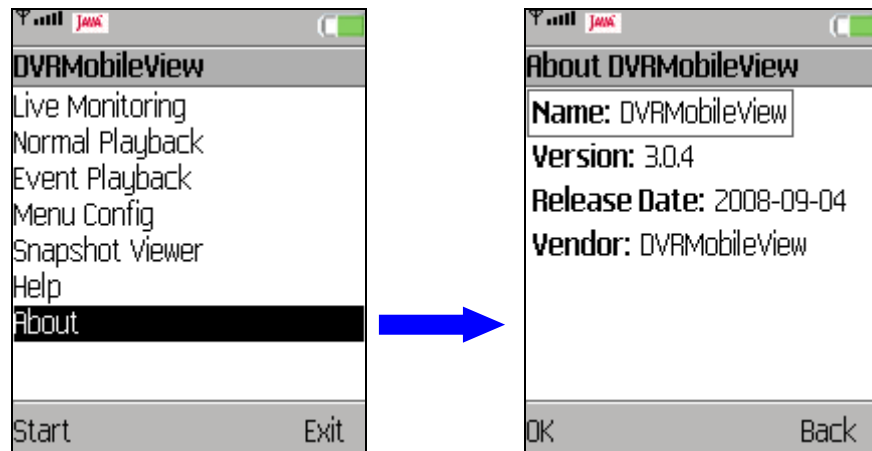
1. Channel selection: Select 'Channel' first and then you can change the viewing channel from the menu or the numerical keys (0~9).
2. Zooming: Select 'Zoom' first and then you can zoom-in zoom-out from the menu or by the navigation keys (up/down). You can also move the zoomed image from the touch screen or by the numerical keys (2/4/6/8). The zoomed image can directly jump to the center or 4 corners by pressing the navigation keys (left/right) or the numerical keys (1/3/5/7/9).
3. PTZ control: Select 'PTZ' first and then you can control the dome camera from your handheld device. You can use the navigation keys to pan or tilt the dome camera. From the menu, you can have the focus, the iris, and the zooming related functions.
4. Snapshot: Once you select 'Snapshot', one still image will be stored in your handheld device. These stored images can be viewed from 'Snapshot Viewer' in the root menu.

Note:

1. Always use 'Exit' to leave your current operation and close the program. The connection may be occupied by your handheld device if insufficient operation is used, and this will cause advanced connection failed.

6. About

From the main page of the Mobile View Software, select <About> and press <Start> to see release information of the Mobile View Software.



Appendix A: Troubleshooting

Refer to the following for solutions to some error situations.

- I. Error occurs while installing or when starting up the Mobile View Software
 - a. Please make sure that the old version of the Mobile View Software on the mobile device is uninstalled. Then reinstall the Mobile View Software again.
 - b. If the software's version number ends in an odd number, please try to install new software with version number ends in even number.

- II. Error occurs while connecting to a DVR or a Video Server
 - a. Basically, most errors occurred due to incorrect network settings.
 1. Please check if the network function works properly on the mobile device.
 2. If the network function works fine on the mobile device, please make sure that the mobile device allows the Mobile View Software to access network. (Check the network privilege settings of Java programs.)
 3. Please disable proxy or select correct port for the target device.

 - b. For causes other than incorrect network settings, error messages will be displayed. The most frequent situations are listed as below.
 1. Errors regarding failure of HTTP/ Socket connection or malformed address/ port:
 - i. The address of the target device may be null or inaccessible (only the device types on the supported list are accessible, such as a DVR). Please check the address and port number of the device.
 - ii. For some mobile devices, the DDNS may not function properly due to the DDNS is not supported by Java platform on the mobile devices. In such cases, users can only use DNS or IP address of the target device.

 2. Errors regarding HTTP/ Socket Authentication:
 - i. Double check the username and password, then try to connect again.
 - ii. If the username and password are correct, please change port setting of the target device and then try to connect again.
 - iii. Certain mobile devices may not correctly support HTTP authentication. For these mobile devices, please do not using port 80, 8080 or 443. Currently tested mobile devices that cannot correctly support HTTP authentication are Nokia 6233, Sony Ericsson K600i, and Toshiba 810T/908A.
 - iv. If the mobile devices do not support authentication, the mobile surveillance is not available due to almost all network access to DVR must be authenticated. The tested case is Sharp WX-T81.

3. Errors regarding HTTP response:

The target device must be upgraded to support mobile surveillance. Please make sure that:

i. For MPEG4 DVR Series:

The second 4-digit set of the software version number must be greater than xxxx-1698-xxxx-xxxx. It is suggested to update to the latest released version.

ii. For H.264 DVR Series:

The second 4-digit set of the software version number must be greater than xxxx-0138-xxxx-xxxx. It is suggested to update to the latest released version.

4. Errors regarding fully occupied connection:

A DVR usually provides a limited number of connections at the same time. If the connection is full, please try to connect again later.

Appendix B: Compatible List

Refer to the following for a list of mobile devices that are compatible with the Mobile View Software.

Brand	Model
Motorola	K3
	V3X
	V8
Nokia	E65
	N73
	N95
Sony Ericsson	k550i
	k800i
	k810i
	w580i
	w610i
	W880i
	P1i
SamSung	SGH-L768
HTC	TyTNII/P4450
	T-Mobile